

# ENTTEC

---

## STORM 24

Ethernet to DMX converter



The Storm 24 is the worlds most powerful Ethernet DMX 512 converter. A high density device when you need to convert large amounts of DMX Over Ethernet data into DMX 512 while keeping costs under control. Ideal for any LED pixel mapped project or large traditional rigs. 1U of rack space gives you 24 Universes of DMX 512

DISCLAIMER This brochure is for general marketing purposes only and should not be relied upon as being complete or accurate.

[www.enttec.com](http://www.enttec.com)

Controls . Lights . Solutions

ENTTEC PTY LTD  
Head office : 7 Macro Court  
Rowville VIC 3178 Australia  
Tel : +61 3 9763 5755  
Fax : +61 3 9763 5688  
sales@enttec.com

ENTTEC EUROPE  
F22-26 Parkhall Business Centre  
40 Martell Road  
London SE21 8EN, UK  
Tel : +44(0) 2070616210  
sales@enttec.co.uk

ENTTEC AMERICAS  
604A Cornerstone Ct.  
Hillsborough NC27278 USA  
Tel & Fax : (888) 454-5922  
sales.americas@enttec.com

# STORM 24

## The most powerful Ethernet to DMX512 converter

With a ground breaking \$65 per port system cost, DMX conversion is no longer a high cost item in your pixel mapping budget. RJ45 outputs also lower cabling costs by using standard crimp connectors instead of more expensive XLR connectors. Needing only 1U means you also save on rack space.

### ► Multi-Protocol support

- Art-Net 1
- Art-Net 2
- Art-Net 3
- sACN
- ESP

### ► Applications

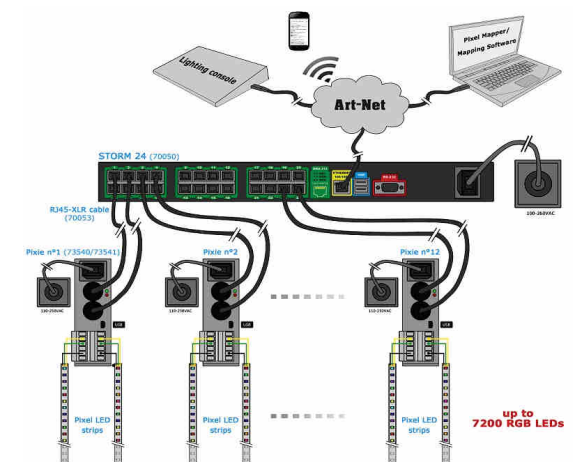
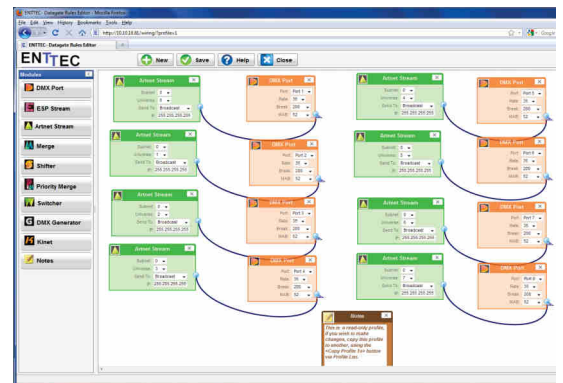
- University / professional theatres
- Architectural installations
- Touring companies / road houses
- Performing Arts Centres
- Trade shows

### ► Hardware

- 24 DMX512 ports
- Break time configurable
- DMX refresh rate configurable
- Number of channels configurable
- Profiles may be selected and viewed with front panel menus or with web browser over Ethernet LCD display
- Profile storage on hard drive or import/export to USB key or FTP
- 10/100/1000 base-T Ethernet port
- Jumbo frame support
- Inbuilt autoranging (90-260V) mains power supply 20W consumption
- Rack mountable (19" x 1U)
- Integral cooling fan

### ► Easy cabling

Easier and lower cabling costs using standard RJ45 outputs. Although XLR connectors are widely used in the entertainment world, when your project isn't traveling the world on a regular basis, RJ45s connectors offer the best price / performance ratio. Using standard shielded CAT5 cable to connect your whole system also helps keep the cost per port down. We use the standard ANSI E1.27-2 specified RJ45 pinout to make sure most equipment connections will be simple.

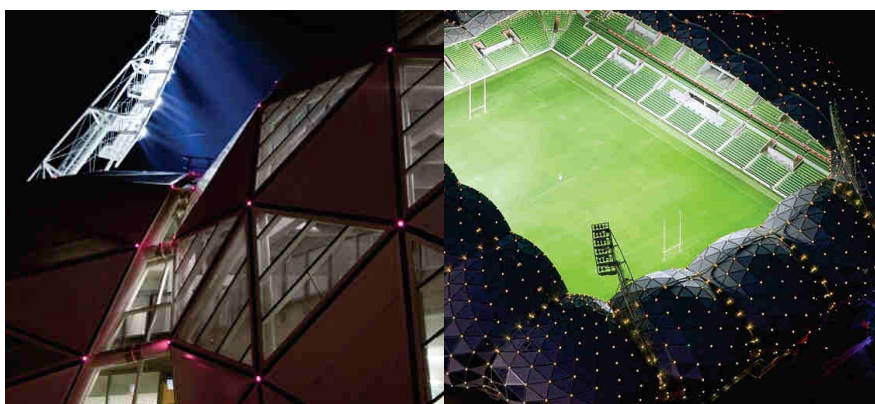


### Dimensions

H43.6mm/1.72" W463mm/18.25" D250mm/10"

### PART NUMBERS

70050 - Storm 24



### ► Amazing performance

Using state of the art FPGA programmable logic, ultra fast DDR memory and Gigabit ethernet, all 24 DMX outputs are synchronised within 100us when using Sync mode.

- No more image ghosting or jumpy updates of your content.
- No other device offers this level of performance.