

Customer Name

Project Name

Part Number



LED DMX Pixel by Pixel Vertical Tube 2 m
DMX-TUBE-6464[™]

CE **RoHS**

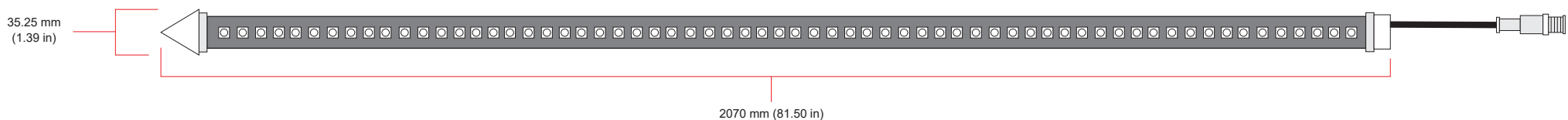
Features

- Double sided effects for 360° viewing angles.
- Full dimming capability 0%-100%.
- Full RGB capability.
- Every LEDs is one RGB Pixel.
- Works with any type of DMX512 control.
- Colorful and vivid effects can easily be achieved.
- If set up in group, great 3D effects can be achieved.
- One year warranty.
- High quality clear plastic casing for optimum optics.

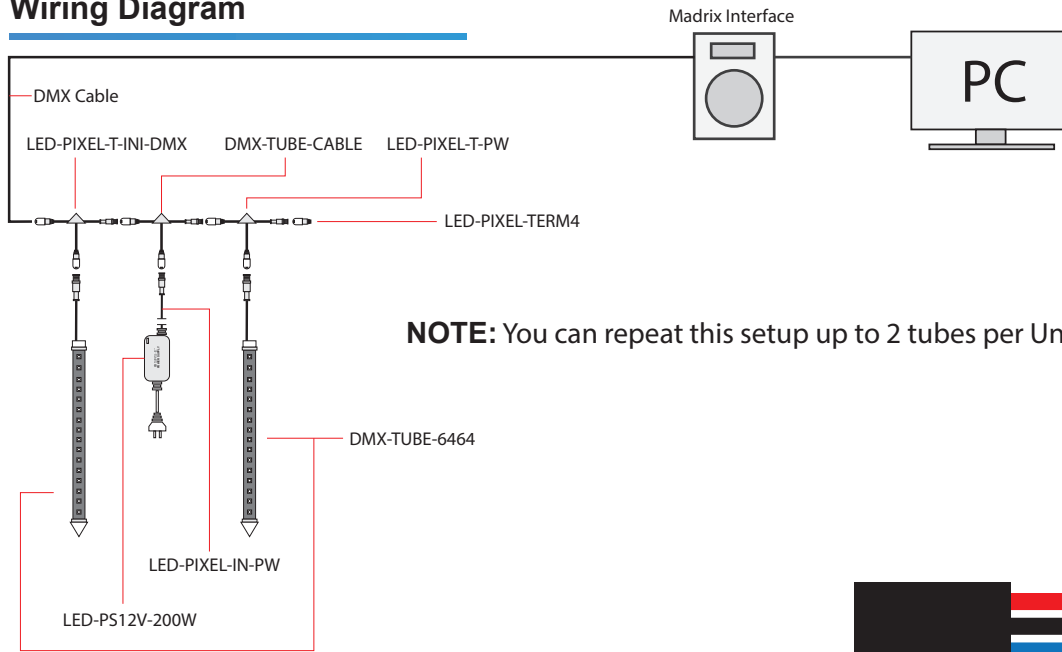
Product Specs

Model Number:	DMX-TUBE-6464
Operating Voltage:	DC 12V
Max Current:	46W
Ambient Temperature:	-20°C ~ 50°C
IP Rating:	IP65
LED Type:	SMD RGB 5050
Total LEDs:	128 (64 on each side)
Total Pixels:	64
Total DMX Channel:	192
Tubes per Universe:	2
DMXAddressability:	Manual Addressing with external device (DMX-TUBE-PROG)
Viewing Angle:	360°
Housing Materia:	Clear Polycarbonate Plastic
Weight:	500g
Dimensions:	2070 mm x 35.25 mm x 35.25 mm 81.50 in x 1.39 in x 1.39 in

Physical Layout



Wiring Diagram



NOTE: You can repeat this setup up to 2 tubes per Universe.

COLOR CODE



NOTES

- The DMX-TUBE-6464 works by connecting a series of them in a, daisy chain.
- They are manually addressed using an external addressing device (DMX-TUBE-PROG).
- The initial DMX signal is acquired by connecting one initial T cable (part number: LED-PIXEL-T-INI-DMX) which provides the main DMX signal input as well as the main 12V DC power input.
- After the initial T Cable, the subsequent cables needed to daisy chain the vert tubes are the LED-PIXEL-T-PW which do not have the DMX connector.
- It is always best to power each 2 tube line that you may have created using the vert tubes from both sides of the line using 1 power supplies (12V 200W each), this will decrease voltage drop and keep everything evenly lit.
- You can have up to 2 Vert Tubes per universe.
- After the first 2 tubes, a new universe will need to be created.

