

Data Sheet

Item No. S5050-LED-RGBWP-DD

Low Cost LED RGB Strip 5050 SMD 5m 16.4ft | Double 60LED/m IP67

LED INFO ON LED STRIP

| | |
|------------------------------------|-------------------|
| LED Density | 18 /ft - 60 /m |
| LED Count (Total) | 300 Per Reel |
| LED Type | Selected 5050 SMD |
| LED Ambience Operating Temperature | -50° - 165° F |

POWER*

| | |
|--|-------------------------------------|
| Working Voltage / Input Voltage / Voltage Forward | 12V DC |
| Power Consumption (Watts) <i>Max.</i> | 2.5 W/ft - 8.40 W/m - 42 W/5 m Reel |
| Current Draw / Input Current / Current <i>Max.</i> | 3500 mA - 3.5 A - 5 m Reel |
| Power Drop Along The Strip (Meter) <i>Approx.</i> | 1 m 8% - 5 m 40% |

PHOTOMETRY

| | |
|--|---|
| Light Color | RGB - Red, Green, Blue - 16 Million Colors Posibles |
| Peak Wave Length (nm) | Red 625/ Green 524/ Blue 471 |
| Brightness (Lumen) | 105 lm/ft - 344.40 lm/m - 1722 lm/Reel (5 m) |
| Beam Angle (Degree) | 120° |
| UV/IR Emission | None |
| Lifespan / Average Lifetime / Lumen Maintenace | 40,000 - 60,000 Hours (50% Brightness Loss) |

DIMENSIONS

| | |
|---|------------------------|
| Reel Total Length (Feet - Meter) | 16.4 ft - 5 m |
| LED Spacing Between Centers (Inches - Milimeters) | .67 in -17 mm |
| LED Spacing Between Edges (Inches - Milimeters) | .45in -11.60 mm |
| Minimum Cuttable Segments (Inches - Milimeters) | 1.96 in - 50mm (3 LED) |
| Width (Inches - Milimeters) | 0.50 in - 12.70 mm |
| Height (Inches - Milimeters) | 0.175 in - 4.45 mm |
| Cable Leads (Inches - Milimeters) | 7 in - 178 mm |
| LED Strip Dimension Drawing | |

LED STRIP INFORMATION

| | |
|---|--------------------------|
| LED Strip IP Rating | Waterproof IP67 |
| LED Strip Adhesive | High Quality 3M Adhesive |
| LED Strip Finish Color / Product Color | White |
| LED Strip Weight (Without Packaging Material) | 6.9 oz. - 195 g |
| LED Strip Warranty | 30 Days Limited |

PRODUCT COUNTRY OF ORIGIN

| | |
|------------------------------|---------------|
| QC Quality Control | China |
| Product Engineering & Design | China |
| Assembled | China |
| Technical Support | USA |
| Product Customization | USA Available |

INSTALLATION MATERIALS & ASSOCIATED PROD.

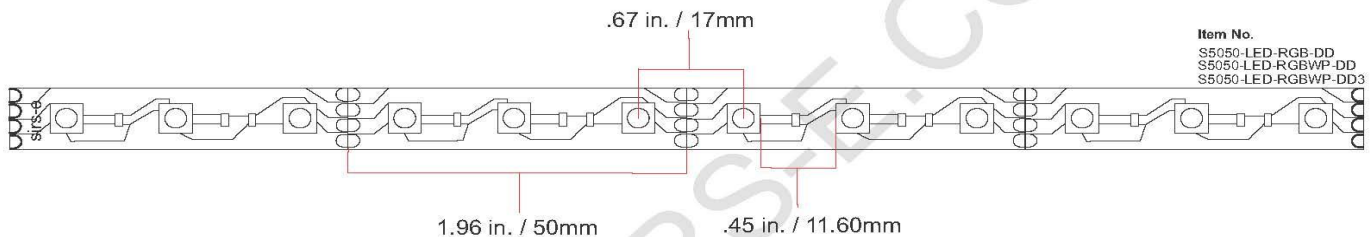
| | |
|---|--|
| Dimming and Color Mixing Options | DMX, Radio Frequency (RF), Infrared (IR), & Analog |
| Max Length in One Run for Linear Lighting | Unlimited Thru .Amplifiers or DMX Controllers |
| Power Supply | Options Available |
| DMX Programming & Stand Alone | Options Available |
| LED RGB Strip Connectors | Options Available |
| Installation Cable 4 Wires | Options Available |
| Installation Cable 2 Wires | Options Available |
| Installation Accessories | Options Available |
| Installation Kits | Soldering Kit, Heashrink Kit, Silicone Tube |

(*) NOTES

- The Power Rating has been measured with the strip power in both ends
- A good technique to minimize voltage drop and increase lumens output is to power the strip on both ends.
- LED electrical and optical characteristics change with the die manufacturing date.
- LED performance and life span is affected by environmental conditions, manufacturing techniques and actual components characteristics.
- We reserve the right to change any data without prior notice.

Segment Close Up and Dimensions

Top View



Front View

