

Package	Interface, sdcard, datasheet, cdrom, usb cable
Software	ESA + ESA PRO on PC/Windows, ESA2 on PC + MAC
Application	ARCOLIS + STICK REMOTE on iPhone/iPad/Android
Available colors	Frame (black or white), use the Stick Design Configurator web site
Options	Dedicated remote control (*), Power supply (*)
Standards	EC, EMC, ROHS, ETL, UL (some are in process)
Image size	Standard 150x110mm picture, contact us for a sample profile
Temperature	-10°C to 50°C
Dimensions	168x128x11,5 mm Complete package 250x150x55 mm
Weight	0,2 kg 0.44 lbs Complete package 0,6 kg 1.32 lbs

SPECIFICATIONS / CONNECTIONS		Built-in features	screw-terminal rear connector (9 pins)	extension socket rear connectors (2x10 pins)	front access connections (open cover)
Power Supply	6V DC 0.65A, supplied		•		USB
DMX Output #1	First universe, 512 channels DMX512 output		•	•	
DMX Output #2	Second universe, 512 channels DMX512 output (*)			•	
USB	USB 2.0 communication for PC/software				•
Ethernet	Advanced networking features	•			
Ports 1,2,3,4	4 Contact closure inputs, connect to ground for operating		•	•	
Ports 5,6,7,8	4 Contact closure inputs, connect to ground for operating			•	
User interface	14 buttons, 1 fader, 28 leds (Touch-sensitive keypad)	•			power/data leds
SDCARD	Micro sd card for stand alone memory use (supplied)				•
RESET	Push button for reset operation				•
RS232	RS232 Serial communication for external synchronisation			•	
Output relay	Automatic Stand by 5V signal			•	
Clock	Real time clock and calendar, 10 minutes saving without power	•			
Infrared receiver	Easy learning triggering from any 36Khz remote control	•			

EASY INSTALLATION

PORT 1,2,3,4 : If your application need to have some external contact closures, make the contacts between the ground and the ports

1. Mount an electrical box inside the wall

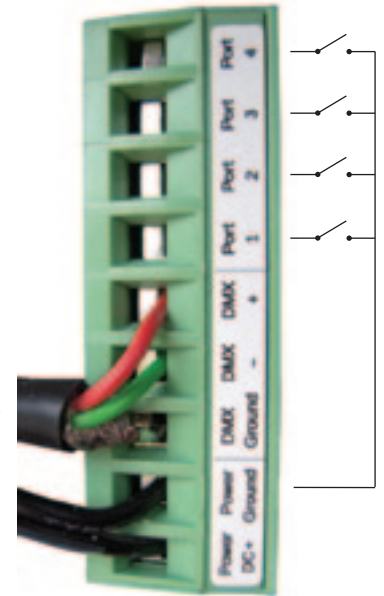
The S.T.I.C.K. controller can be installed in any standard electrical backbox. If you use a double size box, you can insert the power supply inside.



2. Connect the wires

DMX: Connect the DMX cable to the lighting receivers (Leds, Dimmers, Fixtures..) (for XLR: 1=ground 2=dmx- 3=dmx+)

POWER: Connect a 6V DC 0.65A. Be sure to not invert the + and the ground.

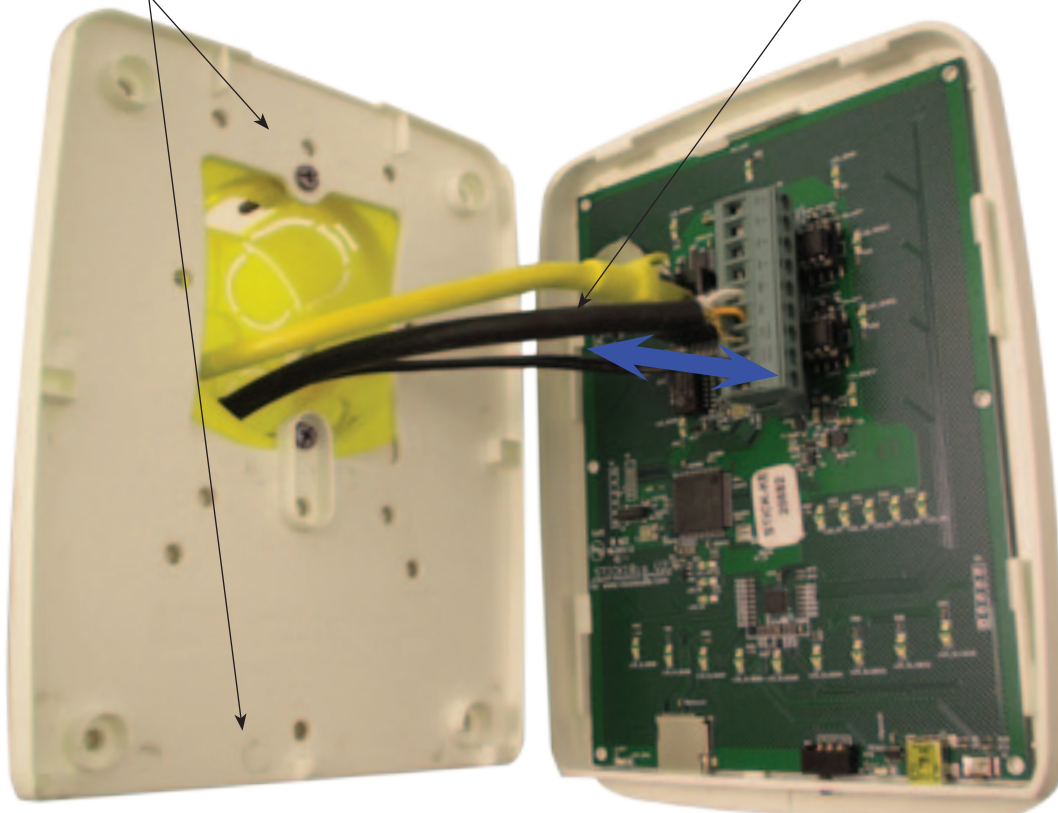


3. Mount the interface on the wall

First, mount the back side of the interface on the wall with 2 or more screws

Secondly, plug the 2 connectors (see blue arrow)

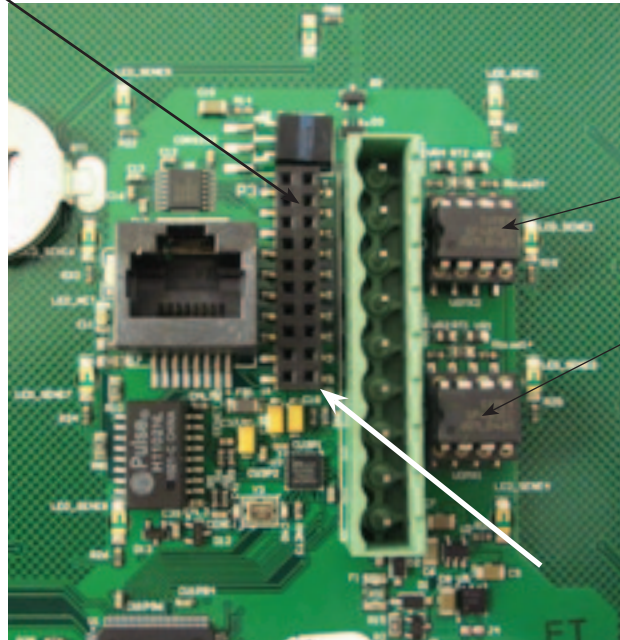
Then, close the interface, using one screw



2x10 pins EXTENSION connector

	P3		
RS232 TX	1	2	GND DMX
RS232 RX	3	4	DMX1-
PORT7	5	6	DMX1+
PORT6	7	8	DMX2-
PORT5	9	10	DMX2+
PORT4	11	12	Relay
PORT3	13	14	3.3V
PORT2	15	16	IR_RX
PORT1	17	18	GND
PORT0	19	20	VIN

Compatible connectors:
 WURTH ELEKTRONIK ref: 61301021121
 MOLEX ref: 10-89-7202
 TE Connectivity ref: 1-87227-0
 FCI ref: 77313-101-20LF
 HARWIN ref: M20-9981046
 SAMTEC ref: TSW-110-xx-T-D
 FARNELL ref: 1841232
 RS ref: 763-6754 673-7534 251-8165
 MOUSER ref: 538-10-89-7202
 DIGIKEY ref: WM26820-ND



You can easily replace DMX CHIPS

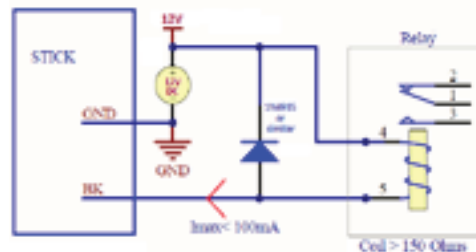
DMX universe #2

DMX universe #1

Ref:
 SP485ECP-L
 MAX485CPA+

PORTS 1 to 8 make contacts between G (GND) and P1..P8

BLACKOUT relay (energy save) using the 2 pins : BK and G (GND)



Example of relay : FINDER
 Ref. 22.23.9.012.4000
<http://www.findernet.com/fr/products/profiles.php?serie=22&lang=en>

RS232 triggering

Make a cable using the 3 pins : TX, RX and G (GND)

Set the RS232 parameters to : 9600bds 8 bits, no Parity, 2 Stop bits

- To play a scene, send 3 bytes : **1 x 255** (x = scene number)
- To stop a scene, send 3 bytes : **2 x 255** (x = scene number)
- To pause a scene, send 3 bytes : **3 x 255** (x = scene number)
- To release a pause, send 3 bytes : **4 x 255** (x = scene number)
- To reset a scene, send 3 bytes : **5 x 255** (x = scene number)

Note: the scene number (x) can be from 1 to 40. For instance, 11 means Page B Scene #3

SOFTWARE and LINKS

ARCOLIS software (iPhone/iPad)
 ARCOLIS software (Android)

<http://itunes.apple.com/en/app/arcolis/id495161115?mt=8>
<https://play.google.com/store/search?q=arcolis>

ESA, ESAPRO software (Windows)
 ESA2 software (Windows, Mac)
 ESA, ESAPRO manuals

www.nicolaudie.com (-> Support -> Downloads)
www.nicolaudie.com (-> Support -> Downloads)
www.nicolaudie.com/manuals.php

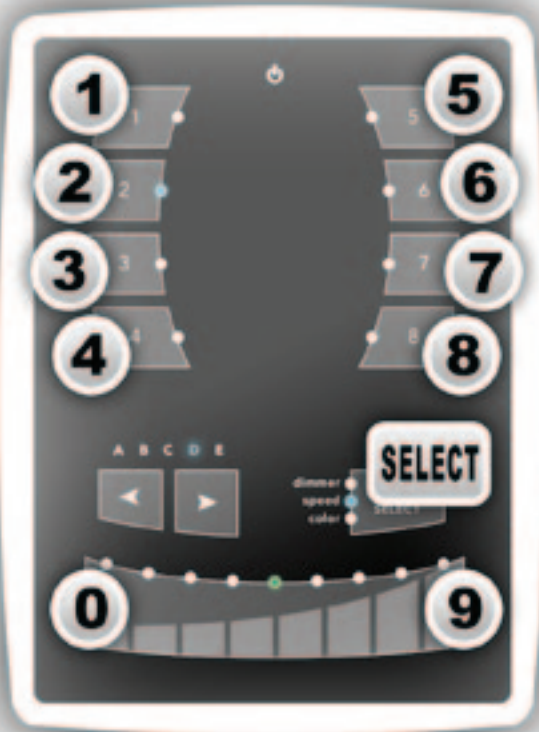
STICK REMOTE
 Remote application for iPhone/iPad, Android, Windows


www.lightingsoft.com

Driver, Firmware, Tools
 STICK Forum
 STICK design configurator

www.nicolaudie.com/hardware.php
www.nicolaudie.com/forum_support
www.nicolaudie.com/stick_config

Some functions are available directly from the STICK keypad using the SELECT button.



SELECT + 1	View time	Example : view 2:45pm = 14:45 = 1445 1445 = 2:45pm (USA) or 14:45 (Europe)
SELECT + 2	View date	Example : view 6 SEP. 2009 date = 060909 060909 = September 6th 2009
SELECT + 3	Set time	Example : set 3:30pm = 15:30 = 1530 1 5 3 0 = 1530
SELECT + 4	Set date	Example : set 5 DEC 2008 date = 051208 0 5 1 2 0 8 = 051208
SELECT + 5	Set Fade time	Example : set 01'32" fade time = 1 minute and 32 seconds = 0132 0 1 3 2 = 0132
SELECT + 9	Set IR	Example : assign an IR key to Scene #2 2 + 
SELECT + 0	Firmware version	Example : view 1.02 firmware version = 0102 0102 = firmware version 1.02