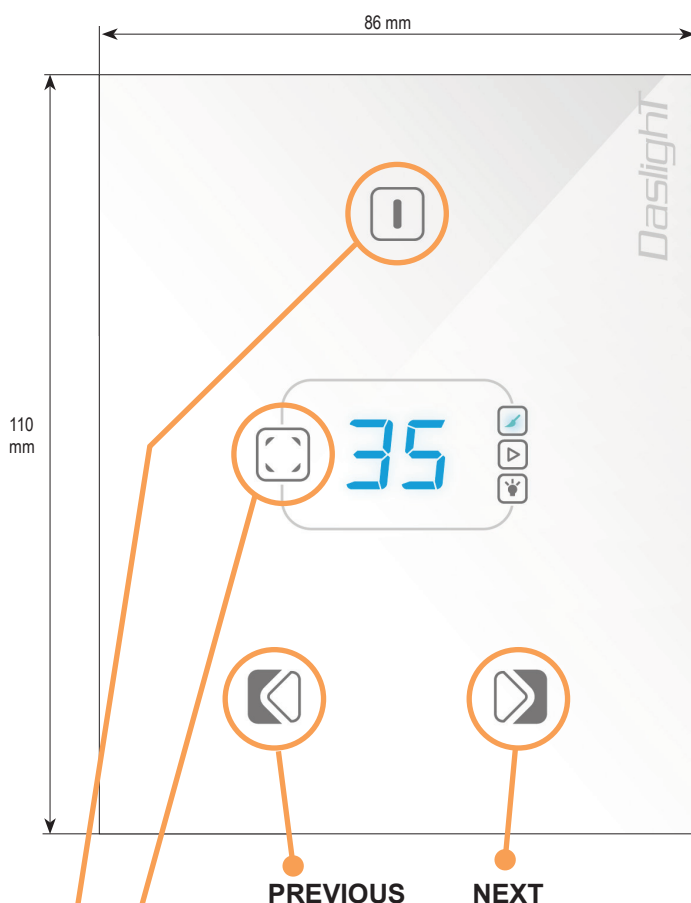
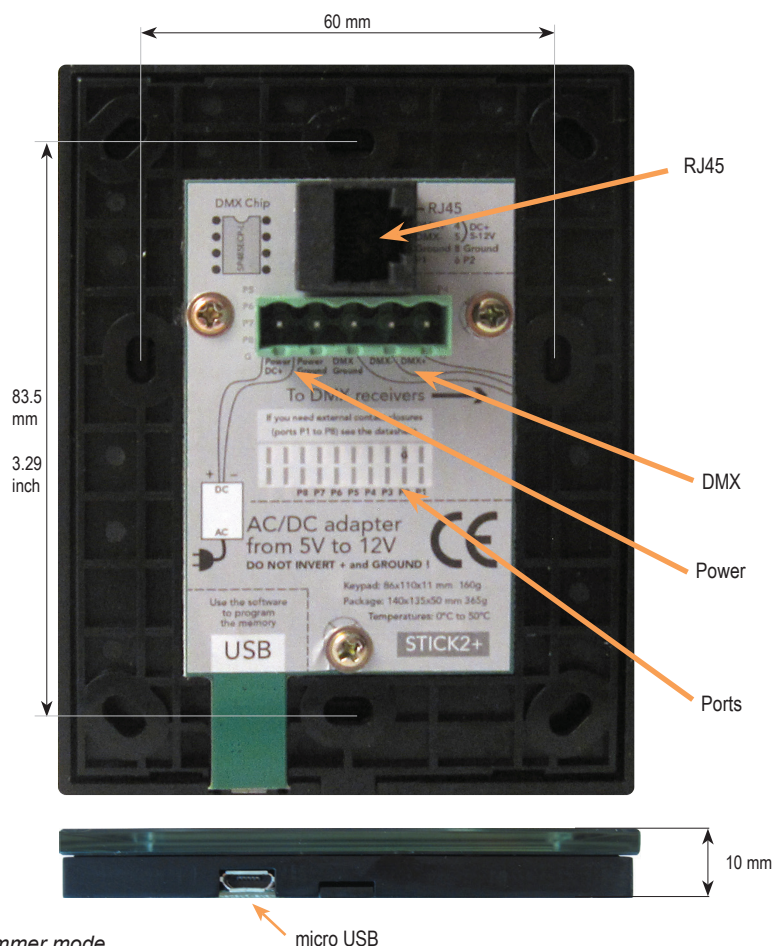


- DMX Stand Alone Controller (512 channels) with a glass face
- 4 touch sensitive buttons (on/off, mode, previous, next)
- Up to 99 dynamic or static scenes
- Live setting of the intensity and color of a scene
- Programmable through the included USB cable and control software
- Compatible with any DMX fixture or DMX LED driver
- Ready to use (pre-loaded with 8 scenes and 170 RGB fixtures)
- Latest ARM CPU technology
- Customized design for OEM, wall mountable
- 8 dry contact trigger ports on PCB and 2 on RJ45



CHANGE MODE : Switch between color, scene and dimmer mode

ON/OFF : Short touch - Easily switch on and off

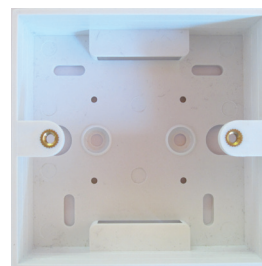


SPECIFICATIONS		AVAILABLE MEMORY	
Package	Controller, cdrom, usb cable, connector block	Depending on the number of scenes used	
OS Requirement	Windows XP/VISTA/SEVEN/8 32/64 bits and USB 2.0	CHANNELS	STEPS Using 8 scenes
Software	Daslight Virtual Controller 3 (PC)	4	9710
Versions	Daslight white glass design	8	6470
Connections	Power (2pins) DMX (3pins) Port (2 pins) Micro-usb	16	3878
Power	From 5V to 12V DC (AC/DC adapter in option)	32	2150
Certifications	EC, EMC, ROHS, ETL, UL (some are in process)	64	1134
Keypad	86x110x10 mm 145g	128	580
Package	140x135x50 mm 365g	256	290
Use	Environement IP20 Temperature 0°C to 50°C	384	191
		512	141

EASY INSTALLATION

1. Mount an electrical box inside the wall

The DPAD 512 controller can be installed in a standard electrical backbox. This box is usually 60mm high and wide, except in Japan and America where it is 83.5mm/3.29 inches high. You can insert the AC/DC adapter inside or outside the backbox.



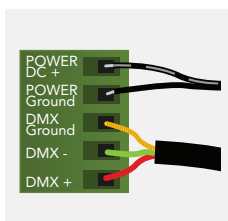
2. Connect the wires

Use the green connector block or RJ45 cable

POWER+DMX

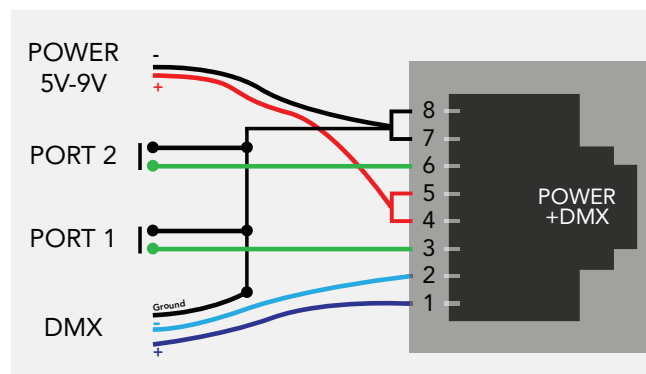
WITH THE CONNECTOR BLOCK

DMX: Connect the DMX cable to the lighting receivers (Leds, Dimmers, Fixtures..) (for XLR: 1=ground 2=dmx- 3=dmx+)
POWER: Connect the AC/DC adapter. Make sure not to invert the + and the ground.



POWER+DMX

WITH THE RJ45 CABLE

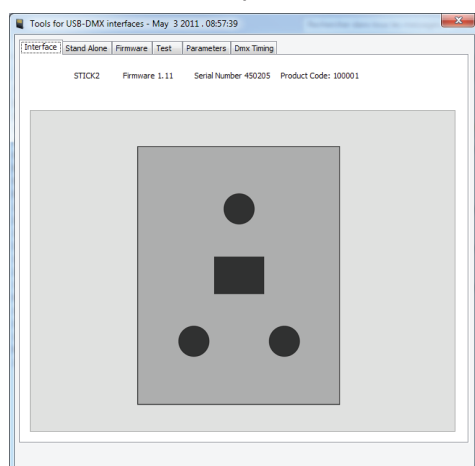


3. Mount the interface on the wall

First, plug the green connector block or RJ45 cable.
 Secondly, mount the back side of the interface on the wall with 2 or more screws
 Then, close the unit by clipping the front panel onto the back plate

SOFTWARE

TOOLS.EXE to set parameters



DVC3 (PC) to make the lighting programs

